

BOSTON JIVE BIG TOP

TRIPS

DAYTIME ENTERTAINMENT

Mark Bale will be DJing throughout the day in the Boston Jive Big Top, spinning a dynamic mix of rock 'n' roll, jive, and rockabilly. His set promises to keep the energy high and the dance floor busy, providing the perfect soundtrack for jive lessons and dancing enthusiasts. Whether you're a seasoned dancer or just love the classic sounds of the 50s, Mark's vibrant selections will ensure an enjoyable atmosphere for all attendees at the show.



FREE ROCK 'N' ROLL & JIVE CLASSES

On Friday, Saturday, and Sunday, Boston Jive will be hosting free jive lessons. These sessions are perfect for both beginners looking to learn the basics and experienced dancers wanting to refine their skills. Boston Jive, known for their engaging and lively dance classes, will ensure a fun and energetic atmosphere. These lessons will provide an enjoyable way to experience the vibrant culture of 1940s and 1950s dance.



Jive: 10.30-12.00 Fri-Sun. **Rock 'n' Roll:** 14.30-16.00 Fri- Sun.

DAVE MANNING

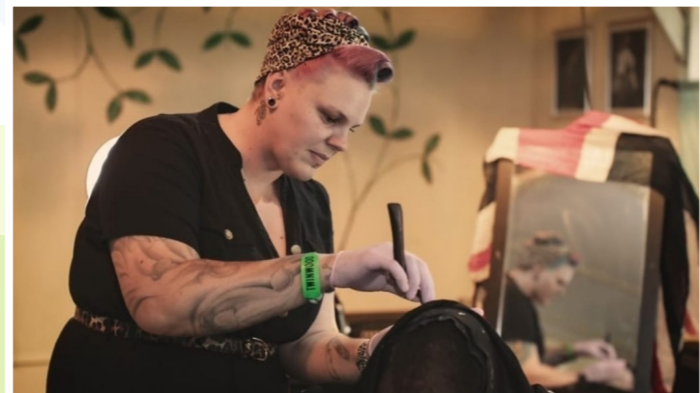
Dave Manning is a versatile musician and storyteller, captivating audiences with his mix of soulful ballads, blues, country, and boogie-woogie. Known for his engaging performances, he has opened for artists like Dan Bern and Mose Allison. Traveling in his '65 Microbus, "Vincent," Manning shares stories and songs inspired by his travels and past work as a documentary videographer. He will perform on Friday, Saturday, and Sunday from 12:30-13:30, offering his unique blend of music and storytelling.



50S HAIR SALON & BARBERSHOP

Look the part after visiting the on site retro hair salon courtesy of Harris Hair Back Comb n Curls. Sharon will be offering full updos from £20. Meanwhile, Tracy Mould will be our resident barber for the weekend with prices starting from £15. Both ladies will accept walk-ins and take cash or card payments.

Opening Times: 11:00-16:00 Friday, Saturday, Sunday.



Discover the local area during your stay with us, we have arranged coaches for your convenience



COACH TRIP TO CROMER - (SOLD OUT)

On Friday 19th July, campers can enjoy a daytrip to the wonderful seaside destination of Cromer. Famous for having one of only five UK seaside piers with a fully working theatre, you can explore the coastline, amusements and town centre shops or simply watch the world go by whilst tucking into good old-fashioned fish and chips! The coach will depart at 10am and leave Cromer at 3pm.

SHUTTLE BUS TO NORWICH CITY CENTRE - £5 PER ADULT - £2.50 PER CHILD

A shuttle bus service will be running all day on Saturday 20th to Norwich city centre. Norwich is a wonderful fusion of the modern and historic. As well as being the most complete medieval city in the UK, it has superb independent as well as High Street shopping, lively restaurants and a heritage that is a delight to explore. Buses will be running continuously all day from 9:00am and the last bus will leave the city centre at 5:00pm prompt. (Tickets must be purchased from the information office) - Card payment only.



1



7



3



6

BINGO

Back by popular demand, Sally is bringing Bingo to The Norfolk Motorhome & Campervan Show! Join us in the Pavilion on Friday, 19th July at 2:30 for a fantastic time filled with fun, laughter, and lots of prizes. Don't miss your chance to shout "BINGO!" and be a part of the action.



2



8



5



4

Get ready to play - it's going to be a full house!

MIRIDER EBIKE TEST TRACK

Explore the latest in e-bike technology at the MiRider eBike Test Track (Stand 61). Test various e-bike models on a specially designed track to experience their performance and comfort. Discover the benefits of e-bikes, including ease of use, eco-friendliness, and health benefits. Expert advice and exclusive show offers available at the MiRider stand.



RETROFESTIVAL

WINGS · WHEELS · STEAM · MUSIC · DANCE · BANDS

9/10/11 AUGUST



NEWBURY SHOWGROUND

RG18 9QZ

OVER 1,000 CLASSIC VEHICLES

VINTAGE FAIRGROUND

3 LIVE MUSIC STAGES

THE BLACK HANGAR: ROCK N ROLL
THE RICKY TICK: MOD / NORTHERN SOUL
THE SPITFIRE PAVILION: VINTAGE

WALL OF DEATH | SHOPPING VILLAGE | FOOD & BARS

www.retrofestival.co.uk

DAY & WEEKEND PASSES AVAILABLE · DAY PASSES ON THE GATE

